

On behalf of the Walker and Lambe families, we wanted to personally say “thank you” for your great contribution to the amazing success of the Sue Walker Memorial Golf Tournament. If you are a sponsor, donor, volunteer, golfer, or dinner guest, in your own way you are helping us realize the goals we set for this event. At Dana-Farber Cancer Institute, world-class physicians and researchers are working diligently to advance innovative research that has the potential to lead to targeted, more personalized treatments. Your involvement is a crucial part of achieving this goal and ultimately eliminating the burden of cancer. We know Sue would be very proud of what we achieved together, and would also have approved of us having some fun in the process! We hope you had a good day, and will plan to join us again in 2015.

Mossy, John & Valerie



Save the Date

**Monday, September
14th, 2015**

**3rd Annual Sue Walker
Memorial Golf Tournament.**

Committee Members

John “Mossy” Walker
Valerie Walker
Patrick “Punter” Culleton
Patrick Fahy
Rosemary Jennings
Tom Lawler
Liam Walsh
Denis Walsh

Thanks for your support this year!

Website: <http://suewalkermemorialevent.org>

Facebook: *Sue Walker Annual Memorial Golf Tournament*



**The 2nd Annual
Sue Walker Memorial
Golf Tournament**



Monday, September 15th, 2014

**Indian Pond Country Club
Kingston, MA**

**Proceeds Benefit Breast Cancer Research
at
Dana-Farber Cancer Institute**



About the Jimmy Fund

The [Jimmy Fund](#) solely supports Boston's Dana-Farber Cancer Institute, raising funds for adult and pediatric cancer care and research to improve the chances of survival for cancer patients around the world.

This year celebrates the 61st anniversary of the Jimmy Fund and Boston Red Sox relationship, and represents one of the most remarkable partnerships between a team and a charity in the history of professional sports.



The Jimmy Fund is also the official charity of the Massachusetts Chiefs of Police Association, the Pan-Massachusetts Challenge, and the Variety Children's Charity of New England. Since 1948, the generosity of millions of people has helped the Jimmy Fund save countless lives and reduce the burden of cancer for patients and families worldwide.

Contact The Jimmy Fund

By mail:

*The Jimmy Fund
10 Brookline Place West
6th Floor
Brookline, MA 02445-7295*

Address for all gifts: (please specify Sue Walker Memorial Golf Tournament)

*Dana-Farber Cancer Institute
P.O. Box 849168
Boston, MA 02284-9168*

Phone: (800) 52-JIMMY (54669)

Email: JimmyFundContactUs@dfci.harvard.edu

Facebook: [facebook.com/thejimmyfund](https://www.facebook.com/thejimmyfund)

AUCTION AND DRAWING ITEMS DONORS

A sincere thanks to all our donors.

- ◆ Crystal Travel
 - ◆ Brian O' Donovan
 - ◆ Kieran Deeny
 - ◆ John & Brid Lambe
 - ◆ Nick & Nerys Bayley
 - ◆ Paul & Joan Rowland
 - ◆ Bryan & Jackie Harte
 - ◆ Dr. Brian L. Leahy
 - ◆ Eamonn Healy
 - ◆ John "Mossy" Walker
 - ◆ Rosemary Jennings
 - ◆ Mandarin Hotel
 - ◆ Helen Lordan
 - ◆ Massage Envy Spa
 - ◆ Joe Greene
 - ◆ Elizabeth Halpern
 - ◆ Jimmy Fund
 - ◆ George Bliss
 - ◆ Damian Dowling
 - ◆ Mary Scardino
 - ◆ Dermot Loftus
 - ◆ O' Hara's Newton
 - ◆ Boston College
 - ◆ Bella Sante Spa
 - ◆ Mary Delahunty
 - ◆ John Concordia
 - ◆ The Talk Restaurant
 - ◆ P3Proswing
-

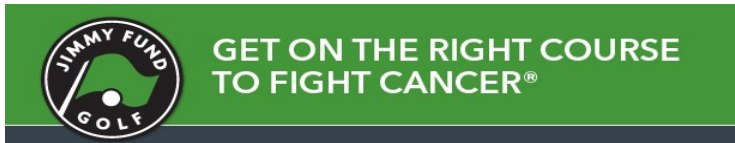
VOLUNTEER LIST

A sincere thanks to all our volunteers.

- ◆ Valerie Walker
 - ◆ Tom Lawler
 - ◆ Paul Lambe
 - ◆ Grace DiVerdi
 - ◆ Mari Moynihan
 - ◆ Claire Lambe
 - ◆ Sharon Dinitz
 - ◆ Robert Rice
 - ◆ Mary Delahunty
 - ◆ Patrick "Punter" Culleton
 - ◆ Chris Lamborghini
 - ◆ Deirdre Walsh
 - ◆ Kathy Fahy
 - ◆ Helen Lordan
 - ◆ Chris Hannon
 - ◆ Jeanne Walker Bourland
 - ◆ Sean Kelly
 - ◆ Rona Tyndall
 - ◆ Christina Pescatore
 - ◆ Declan Gilvarry
 - ◆ Marlayna Schmidt
-

AUCTION AND DRAWING ITEMS

- ◆ One week car rental in Ireland
- ◆ 2 tickets to Celtic Sojourn Christmas Show
- ◆ 1 week at Orlando Vacation Home
- ◆ 1 week at vacation home in Ballyvaughan, Co. Clare, Ireland
- ◆ 1 week at Sugarloaf Vacation Home
- ◆ Bella Santa Spa Gift Basket
- ◆ 1 week at vacation home in Louisburgh, Co. Mayo, Ireland
- ◆ 1 week on Golf Course, Eastman, NH
- ◆ Weekend in Kennebunkport, Maine
- ◆ P3ProSwing Golf Simulator – PRO vers. includes 92 courses
- ◆ Weekend at North Conway Vacation Home
- ◆ Dinner at Paramount Rest.
- ◆ Handmade Necklaces
- ◆ Golf lessons in Lexington MA
- ◆ Signed Ireland Rugby Jersey
- ◆ Abbey Restaurant Gift Basket—5 bottles of wine and \$200 gift certificate
- ◆ Golf and lunch/dinner for 3 at Andover Country Club
- ◆ Golf for four at The International Golf Club, Bolton, MA
- ◆ 70,000 American Airlines miles
- ◆ 1 night stay at Mandarin Hotel Boston plus Dinner at Abe & Louie’s Restaurant
- ◆ Patriot’s Tickets Package (Live Auction Item)
- ◆ 2 Porter Café, West Roxbury Gift Vouchers
- ◆ Brunch for 4 at West on Centre, West Roxbury
- ◆ 4 Tickets to Boston College football game
- ◆ Wine Gift Basket
- ◆ 4 Red Sox Tickets for 9/23
- ◆ 2 Bottles of Irish Whiskey
- ◆ Massage by Envy Spa
- ◆ 5 Gift Certificates to O’ Hara’s
- ◆ 2 Handmade Necklaces
- ◆ iHome Speaker
- ◆ 2013 Red Sox World Series Water Print
- ◆ 2 Bloody Mary Gift Baskets
- ◆ Gift Certificate to The Talk Restaurant, Watertown
- ◆ 2 Alex and Ani bracelets
- ◆ Golf Clubs (Driver, Hybrid)



Welcome Friends,

It is with great pride and joy that we welcome and thank you for joining us on this our 2nd Annual Sue Walker Memorial Golf Tournament. This event has two goals:

- ◆ To raise funds for breast cancer research
- ◆ To honor Sue Walker

On February 6th 2013 Sue (Lambe) Walker lost her lengthy battle with breast cancer. In putting together this event we wanted to create something special that would not only help raise awareness and funds for breast cancer research but would also honor Sue’s commitment to life and her love of family and friends.

2013 Tournament Highlights

#1 in Funds Raised by a new Jimmy Fund golf tournament in 2013.

- ◆ Net Proceeds \$40,000
- ◆ 124 Golfers
- ◆ 1 Gold Sponsor
- ◆ 1 Bronze Sponsor
- ◆ 5 Cart Level sponsors
- ◆ 6 Competition Sponsors
- ◆ 190 dinner guests
- ◆ 30 Patron Sponsors
- ◆ 50 T-box signs
- ◆ 20 auction donors, raising \$10K
- ◆ 12 Raffle donors

“Congratulations on an incredibly successful event!

We definitely appreciate all of your hard work in raising money to support breast cancer research here at Dana-Farber. I can’t tell you how much of a difference this kind of fundraising means to us as an organization. In these days of tightening research budgets, the reason that we are able to keep moving forward in our fight against cancer is events like this. Thank you again for including me in this event and my best wishes to you and your family” Dr. Ligibel .

Dr. Ligibel was the guest speaker at last years event.

EVENT SPONSORS

SILVER SPONSORS



BRONZE SPONSORS

Bernat Plumbing & Heating

LUNCH SPONSORS



CART SPONSORS

Cape Cod Golf Group
Frank Kenny

COMPETITION SPONSORS

Steve Miller	Boston Sweats
Eoin McCarthy	MinuteMan Painting
Walsh Family	Production Basics
Vincent & Diane Spillane	Mary & Jim Scardino

PATRON SPONSORS

- ◆ 451 Marketing - A J Gerritson
- ◆ Adam Thomas
- ◆ Kenny McCarthy Construction
- ◆ Lawler Family
- ◆ Mossy, John & Valerie Walker
- ◆ The Field Pub—Jerry Colman
- ◆ Mike Carey Drywall
- ◆ Newcastle Systems - John O'Kelly
- ◆ Peoples Federal Savings Bank
- ◆ Steve & Christina Pescatore



Guest Speaker

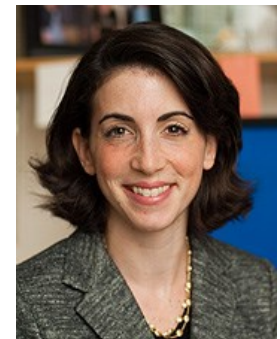
Erica L. Mayer, MD MPH

Senior Physician, Susan F. Smith Center for Women's Cancers

Dana-Farber Cancer Institute

Assistant Professor of Medicine,

Harvard Medical School Boston, Massachusetts



Erica L. Mayer, MD MPH is a Senior Physician in the Susan F. Smith Center for Women's Cancers at the Dana-Farber Cancer Institute, and an Assistant Professor in Medicine at Harvard Medical School. She co-chairs the DFCI Clinical Faculty Council, directs the DFCI Advanced Fellowship in Medical Oncology Specialties, and serves as the DFCI Faculty Education Coordinator for Breast Oncology. In addition to caring for patients with breast cancer, her research focuses on the evaluation of novel therapies for the management of breast cancer.